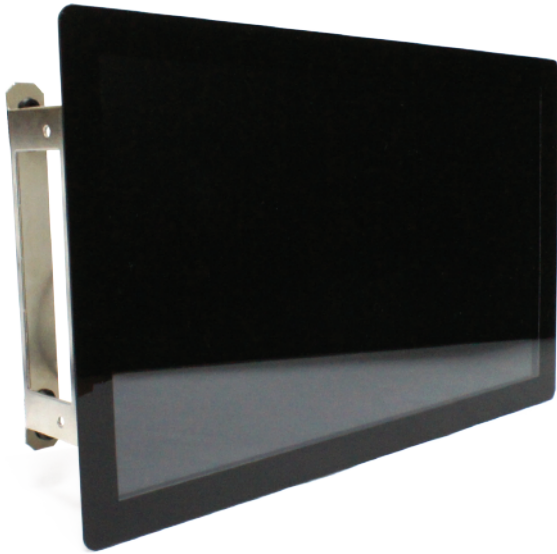


Prism-1010W

Multitouch projective capacitive touch LCD



10.1 inch multitouch optical bonded crystal clear touchscreen with extreme low reflection

Comes with ready to use software under Linux and Android and is plug and play with TechNexion ARM development kits

Specifications

Screen size	10.1 inch
Touchscreen	multitouch optical bonded projective capacitive with cover lens
Interface	1channel 18 bit LVDS (display) 6 pin ZIF I ² C (touchsensor)

Touchsensor Characteristics

Touch technology	Projected Capacitive
Touch construction	100% Optical bonded on LCD panel
Multitouch	Yes
Activation force	No pressure required
Cover glass thickness	1.0 mm
Cover Glass Hardness	>9H
Optical transmittance	>89%
Touch linearity	<1 mm
Touch report rate	80-100 interrupts/sec
Touch interface	I ² C
Touch controller	integrated on FPC of touch sensor
Touch connector	6 pin ZIF
Software	Linux, Android and Windows embedded Compact 7

LCD Characteristics

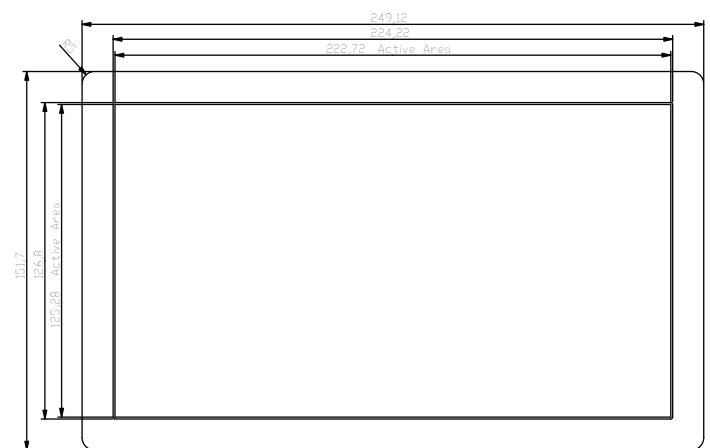
Display size	10.1 inch
Resolution	800 x 480 pixels
pixel pitch	0.2175 x 0.2088
Active area	222.72 x 125.28 mm
Brightness	200 cd/m ²
Contrast ratio	500:1
Viewing angle	90/50
Backlight life	>10,000 hours (LED)
Power consumption	0.65W (LCD) 1.53W (backlight)
Interface	LVDS single channel 18 bits

Environmental and Mechanical

Temperature	0° to 50° C
Humidity	10-90%
Dimensions	249 x 151.7 x 7.65 mm
Weight	355 grams

Dimensions

units in mm



Order Information

PRISM-1010W-START	Startkit containing 10.1 inch PCAP multitouch screen + converter PCB + cables to connect to TechNexion development kits and software
PRISM-1010W	10.1 inch optical bonded PCAP LCD screen bulk packed (MOQ's apply)

TechNexion

Phone: +886-2-8227-3585
E-mail: sales@technexion.com
Web: <http://www.technexion.com>

