



SSD2933

29" Resizing LCD, Brightness is 500 nits, LED backlight, 1366x445 ultra wide aspect ratio 16:5.2

SSD2933 is an innovative ultra-wide, LED backlight LCD display. It provides LCD panel with specific ratios for digital signage, public transportation, exhibition hall, department store, vending machine and industrial applications.

Key Features

- Resizing LCD
- Ultra Wide Screen (16 : 5.2)
- LED Backlight
- High Brightness 500nits
- Wide Viewing Angle
- High Uniformity
- Wide Dimming
- Life Expectancy
- Slim Bezel



Specifications

Preliminary

Model No.	SSD2933
Description	29" Resizing LCD, 500nits, LED backlight, 1366x445
Display Area	697.7 x 227.8 mm
Brightness	500nits
Resolution	1366 x 445
Aspect Ratio	16 : 5.2
Contrast Ratio	3000:1
Pixel Pitch (mm)	0.51 x 0.51
Viewing Angle	178°(H), 178°(V)
Display Colors	16.7M
Response Time (Typical)	6.5 ms
Power Consumption	48W
Dimensions (mm)	738x274.1x54.7mm
Weight (Net)	6.5Kg
LED Driving Board	LID on T-COM board
Control Board (Optional)	AD2662GD
<input type="checkbox"/> AD2662GD	VGA + DVI-D
<input type="checkbox"/> Others	
F / R Control Button	<input type="checkbox"/> 5 Key <input type="checkbox"/> 4 Key
<input type="checkbox"/> 5 Key	Power Switch, Menu, Select (+,-), Auto
<input type="checkbox"/> 4 Key	Power Switch, Menu, Select (+,-),
OSD Menu	Brightness, Contrast, H/V Position, Color, Phase, Clock...
Optional	<input type="checkbox"/> AOT <input type="checkbox"/> Touch Screen

Specifications are subject to change without notice.

All brands or product names are trademarks or registered trademarks of their respective companies.

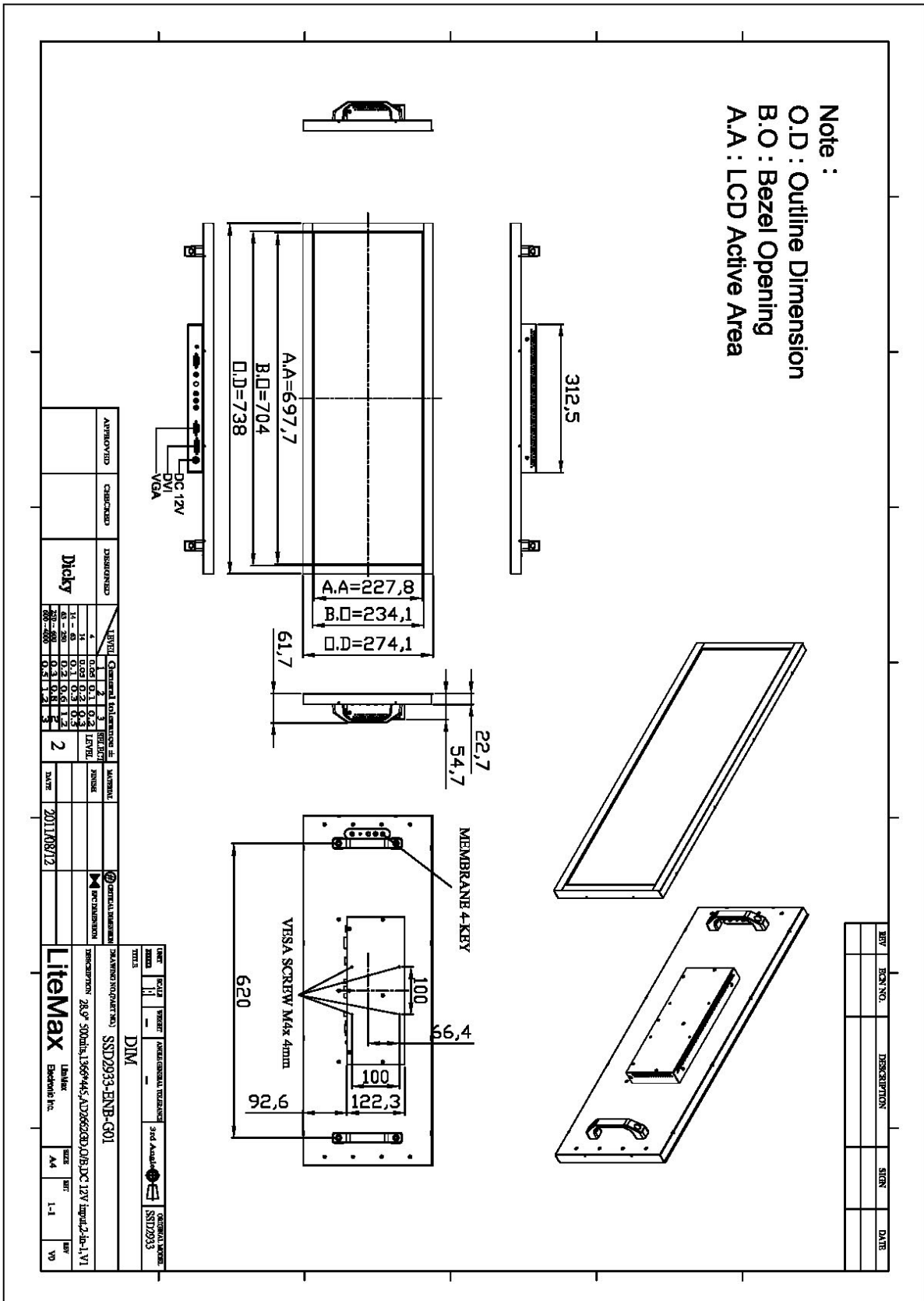
SSD= Panel+ LED Driving Board + Control Board



Mechanical Drawing

Panel Outline Dimensions

Unit: mm





Part Number	Description
SSD2933-ENB-G01	29",500nits,1366*445,12V DC,O/B,AD2662GD,V01

Optional Accessories

Part Number	Description
810618301010	CABLE.POWER.AC.1830mm USA type
810618301090	CABLE,POWER,AC,1830mm Europe type
810618301050	CABLE.POWER.AC.1830mm UK type
810618301170	CABLE.POWER,AC,1830mm Australia type
810618301030	CABLE.POWER.AC.1830mm Japan type